



W5PC

THE AMATEUR RADIO CLUB OF PARKER COUNTY NEWSLETTER

ARCPC NEWSLETTER VOLUME 21 NO. 8

AUGUST 2011 ISSUE

ARCPC OFFICERS

PRESIDENT

TONY GUESS N5NRU

VICE PRESIDENT

RICHARD LUEDTKE
KF5ILA

SECRETARY- TREASURER

JERRY THOMPSON W7JT

DIRECTORS

KEN STOUT K5KMS
WILL TEAGUE W5KD

CLUB SERVICES

W5PC TRUSTEE
WILL TEAGUE W5KD

HOSPITALITY

JUDY WOLF KB5JEY
TIM SMITH KF5HMH

RACES-ARES

ALLEN BEADLE KB5AB

VE TESTING

DOUG MAY WB5VQQ

FIELD DAY 2011

KEN STOUT K5KMS

HAM FEST

RICHARD LUEDTKE
KF5ILA

WEBMASTER

AL WARREN WR5AW

NEWSLETTER- HISTORIAN

WILL TEAGUE W5KD

ARRL WEST GULF-NTX STAFF

DAVID WOOLWEAVER
K5RAV
JOHN STRATTON N5AUS
JAY URISH W5GM

2011 PEACH PEDAL BIKE RIDE



Article Taken From Weatherford Democrat

Photos by Will Teague W5KD & Andrew Teague

Organizers of the 23rd annual Peach Pedal Bike Ride say 2,270 riders braved the heat at the event on Saturday. The ride saw a 20 percent jump in participation compared to last year.

Participants from across Texas as well as Louisiana, Oklahoma, and even one rider from Wisconsin made the trek to Weatherford for the ride, which included routes of 100 kilometers, 39 miles, 26 miles and 9 miles. The event is a joint effort between the Weatherford Chamber of Commerce and the Weatherford College Foundation.

“We can’t thank our volunteers, sponsors and riders enough,” said Brent Baker, WC administrator and Peach Pedal director. “Yet again, our post-race surveys were overwhelmingly positive, and the friendly people always top the list of things the riders like.” Baker said more and more riders are using online registration for the event; more than 1,500 compared to about 900 people in 2010.

Organizers are already making notes to improve on next year’s ride, which be held July 14, 2012, in conjunction with the Parker County Peach Festival.

Sponsors included Jerry’s Auto Group, Power Service Diesel Additives, Albertson’s, Wood Orthodontics, and Rosa’s Café.

Groups volunteering at the ride included Weatherford College employees, Weatherford College Phi Theta Kappa, Rotary Club of Weatherford, Wood Orthodontics, Parker County American Red Cross, several Boy Scout troops and Cub Scout packs, Weatherford Police, Parker County Sheriff’s Reserves, Weatherford Fire Department, **Amateur Radio Club of Parker County**, Brock Baptist Church, Newberry Cumberland Presbyterian Church, the “Designing Women” of the Millsap Rest Stop, Weatherford Evening Lions Club, Phoenix Masonic Lodge, and others.

“It’s amazing to me that all of these volunteers will give up a Saturday in the blazing heat to make this event work,” Baker said. “Hats off to Parker County...you made us proud.”



CLUB BUSINESS

Minutes of the July 2011 Meeting



The Amateur Radio Club of Parker County met on Tuesday, July 12, 2011. President Tony Guess N5NRU called the meeting to order at 19:03 hours. The invocation was given by Allen Beadel KB5AB.

ANNOUNCEMENTS: Allen Beadel, KB5AB gave a report on ARES activities, including the Peach Pedal. The technician class has been moved to August. Al Warren, WR5AW announced that he will contact different Web Hosts about putting our web site on a new server.

OLD BUSINESS: Al Warren, WR5AW gave a report on the Peach Pedal bike ride. SAGS were in short supply. Several suggestions were made to improve our reporting of the race.

NEW BUSINESS: Jeanine Leonard suggested that we bring the club to the attention of other groups (non ham) in the county.

Allen Beadel, KB5AB moved the we have an introduction to amateur radio at the Weatherford Library Elizabeth Hunkele, N5ONE seconded. The motion was approved.

A motion by Elizabeth Hunkele, N5ONE and seconded by Will Teague, W5KD to participate in Christmas on the Square was approved.

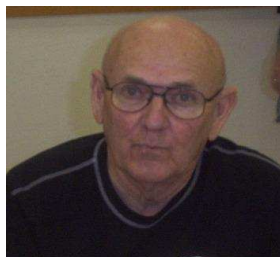
The minutes were approved as published in the newsletter. The motion was by Will Teague, W5KD and seconded by Ron Luedtke KF5IOA.

The motion regarding the quorum numbers failed by a show of hands.

Ice Cream Social will be the program for the next meeting.

Articles or columns are welcomed for the newsletter per Tony Guess, N5NRU and Will Teague, W5KD. The group thanked Will Teague, W5KD for his great work on the newsletter.

The meeting was adjourned at 1950 hours.



Respectfully submitted
By Jerry Thompson W7JT, Secretary/Treasurer



ARRL INFORMATION

The Amateur Radio Club of Parker County (ARCPC) is an ARRL affiliated club. If you are an ARCPC member and have not yet joined the ARRL you should consider the benefits listed below.

- QST, Your Monthly Membership Journal
- Members-Only Web Services
- Technical Information Service (TIS)
- Affinity Benefits
- Outgoing QSL Service
- Continuing Education
- ARRL as an Advocate
- Regulatory Information Branch
- Public Relations for Amateur Radio
- ARRL Field Organization
- ARRL-sponsored contests
- Operating Awards
- Local Clubs
- Amateur Radio Emergency Service
- Hamfests and Conventions
- Volunteer Examiner Coordinator Program

About the ARRL

Founded in 1914, the ARRL is the national association for Amateur Radio in the USA. ARRL members enjoy information, services and benefits for a variety of interests and activities pursued by hams. ARRL publications, news and educational resources help support individuals and local radio clubs.

Join Today!

Whether your interest is emergency communications, public service, personal safety, making friends, or expanding your knowledge of electronics and communications, now is the time to join with ARRL's 155,000 members. ARRL members enjoy ham radio to the fullest!

Create an Online Guest Account

Be Our GUEST for 90-days Connect with other hams -- Customize your home page to see local events, clubs and news -- Receive E-Newsletters on topics you select -- Have The ARRL Letter delivered to your inbox.

ANNOUNCEMENTS



ARCPC HOSPITALITY

August, 2011 Meeting

Annual ARCPC Ice Cream Social

Judy Wolf

KB5JEY



Tim Smith

KF5MHM



Jake Sez!

**"If it ain't broke, don't fix it,
but keep it in good repair."**

ARCPC VE TESTING

VE testing for all license classes and upgrades will be conducted on the third Thursday of each month, except November and December, at 7:00 pm at the Emmanuel Baptist Church, 1706 S. Main St. Weatherford. Enter side door of main building.

PARKER/PALO PINTO INFORMATION NET

Mondays at 7:00 pm on 147.040 (tone 110.9) Alt: 146.900 or 443.800

WC5C Net

147.16+ 110.9
Thursdays at 8:00 pm - 8:45 pm
on 147.16 110.9 Azle

Open directed net

All licensed amateurs TECH and above welcome
Topics include ham-specific swap listings, social and technical talk, club activities and projects, bulletins and announcements.

Ham Swap Meet & Sidewalk Sale (In Ft. Worth)

Trail Lake Plaza I20 at Trail Lake Drive. In front of JWJ Computer Outlet 1st Saturday every month 6:30 AM.



Upcoming Ham Fests and Conventions

08/27/2011 | Gainesville Hamfest 2011

Location: Gainesville, TX

Type: ARRL Hamfest

Sponsor: Cooke County Amateur Radio Club

Website: <http://www.gainesvillehamfest.org>

10/01/2011 | HamEXPO 2011

Location: Belton, TX

Type: ARRL Hamfest

Sponsor: Temple Amateur Radio Club

Website: <http://www.beltonhamexpo.org>

10/21/2011 | West Gulf Division Convention (Texoma Hamarama)

Location: Ardmore, OK

Type: ARRL Convention

Sponsor: Texoma Hamarama Committee

Website: <http://www.texomahamarama.org>

11/05/2011 | Enid Hamfest

Location: Enid, OK

Type: ARRL Hamfest

Sponsor: Enid Amateur Radio Club

Website: <http://www.enidarc.org/enidhamfest>

The August 2011 ARCPC Program

The August program will be the annual Ice Cream Social. Bring your favorite brand/ flavor of ice cream and/or cookies. Cake and brownies are also good. Bring a Friend!

Universal Time Coordinated

Handy Reference Table

To make the conversion to your local time, see the chart below. Find your local time in the first column. If you are on Central Daylight Saving Time (CDT), you would use the fourth column to find your Zulu Time/UTC. For instance, if it's 11 a.m. Central Daylight Saving Time in Dallas, TX, it's 1600 hours in Zulu time/UTC.

| LOCAL | EDT | EST | CDT | CST | MDT | MST | PDT | PST |
|----------|------|------|------|------|------|------|------|------|
| Midnight | 0400 | 0500 | 0500 | 0600 | 0600 | 0700 | 0700 | 0800 |
| 1 a.m. | 0500 | 0600 | 0600 | 0700 | 0700 | 0800 | 0800 | 0900 |
| 2 a.m. | 0600 | 0700 | 0700 | 0800 | 0800 | 0900 | 0900 | 1000 |
| 3 a.m. | 0700 | 0800 | 0800 | 0900 | 0900 | 1000 | 1000 | 1100 |
| 4 a.m. | 0800 | 0900 | 0900 | 1000 | 1000 | 1100 | 1100 | 1200 |
| 5 a.m. | 0900 | 1000 | 1000 | 1100 | 1100 | 1200 | 1200 | 1300 |
| 6 a.m. | 1000 | 1100 | 1100 | 1200 | 1200 | 1300 | 1300 | 1400 |
| 7 a.m. | 1100 | 1200 | 1200 | 1300 | 1300 | 1400 | 1400 | 1500 |
| 8 a.m. | 1200 | 1300 | 1300 | 1400 | 1400 | 1500 | 1500 | 1600 |
| 9 a.m. | 1300 | 1400 | 1400 | 1500 | 1500 | 1600 | 1600 | 1700 |
| 10 a.m. | 1400 | 1500 | 1500 | 1600 | 1600 | 1700 | 1700 | 1800 |
| 11 a.m. | 1500 | 1600 | 1600 | 1700 | 1700 | 1800 | 1800 | 1900 |
| NOON | 1600 | 1700 | 1700 | 1800 | 1800 | 1900 | 1900 | 2000 |
| 1 p.m. | 1700 | 1800 | 1800 | 1900 | 1900 | 2000 | 2000 | 2100 |
| 2 p.m. | 1800 | 1900 | 1900 | 2000 | 2000 | 2100 | 2100 | 2200 |
| 3 p.m. | 1900 | 2000 | 2000 | 2100 | 2100 | 2200 | 2200 | 2300 |
| 4 p.m. | 2000 | 2100 | 2100 | 2200 | 2200 | 2300 | 2300 | 2400 |
| 5 p.m. | 2100 | 2200 | 2200 | 2300 | 2300 | 2400 | 2400 | 0100 |
| 6 p.m. | 2200 | 2300 | 2300 | 2400 | 2400 | 0100 | 0100 | 0200 |
| 7 p.m. | 2300 | 2400 | 2400 | 0100 | 0100 | 0200 | 0200 | 0300 |
| 8 p.m. | 2400 | 0100 | 0100 | 0200 | 0200 | 0300 | 0300 | 0400 |
| 9 p.m. | 0100 | 0200 | 0200 | 0300 | 0300 | 0400 | 0400 | 0500 |
| 10 p.m. | 0200 | 0300 | 0300 | 0400 | 0400 | 0500 | 0500 | 0600 |
| 11 p.m. | 0300 | 0400 | 0400 | 0500 | 0500 | 0600 | 0600 | 0700 |

LEGEND:

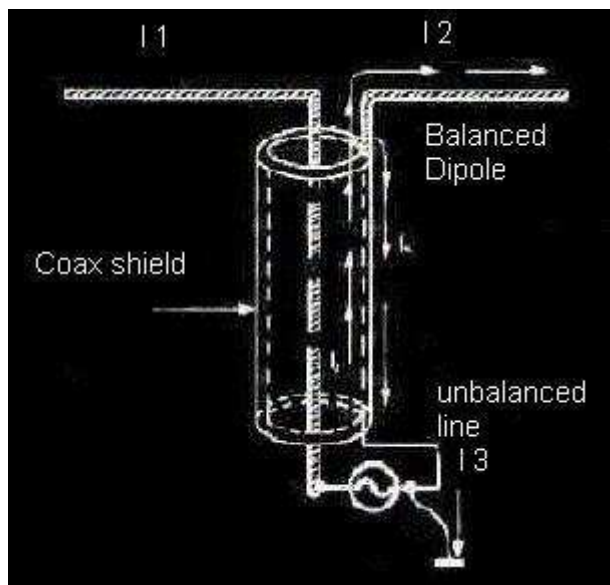
- EDT = Eastern Daylight Saving Time**
- EST = Eastern Standard Time**
- CDT = Central Daylight Saving Time**
- CST = Central Standard Time**
- MDT = Mountain Daylight Saving Time**
- MST = Mountain Standard Time**
- PDT = Pacific Daylight Saving Time**

Technical Notebook

BALUN (Balanced-Unbalanced) Theory

Baluns (BALANCED to UNbalanced) are still a mystery for many hams; the only way to understand them is to learn what a balun is and how to use it. The word balun means balanced-unbalanced: it's used to adapt a balanced device to an unbalanced one. In a balanced device (as most types of antennas are) we have on both terminals the same voltage referred to common ground (if it's not then it is an unbalanced device). A dipole with direct feed is balanced, a coaxial cable is unbalanced. In the figure below we have a dipole with coaxial cable direct fed (i.e. RG213).

While applying RF we originate 2 currents flows on the coax cable:



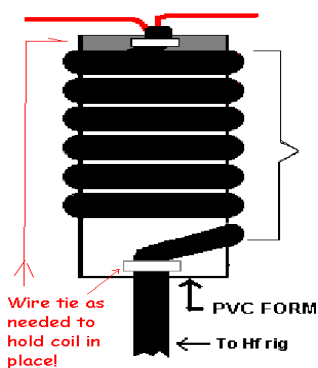
■ I_1 , which flows through the center wire of coaxial cable and from transmitter goes up to the dipole;

■ I_2 , which flows (for the skin effect) on the inside part of the copper shield.

The two currents, equal and opposite null themselves so no radiation takes place from coaxial cable. The two currents go on the dipole to be radiated, part of it comes back, the one on the shield gets back through the external side of the shield. We have 2 currents on the shield, I_2 and I_3 , the value of this current (which we'll call I_3) depends to the impedance value of the external side of coaxial cable with respect to ground (in other words it will find high or low resistance), if impedance will be high, I_3 will find high resistance and its value will be low; if impedance will be low, resistance will be low and I_3 value will be high; in this way I_3 will radiate RF and the external side of the coaxial cable will radiate as a third wire of the dipole. It's as we have a dipole

with 3 wires. As a consequence the radiation pattern will be distorted. Often this new third wire is near TV and telephone cables radiating directly on them producing a source of TVI and RFI. This new third wire, when its impedance is low, changes the dipole impedance so we can have high S.W.R. That is the reason why (without a balun) varying the coaxial cable length causes changes in the S.W.R. You can see the difference by using a balun device to void this current (I_3). We need a high impedance for RF on the external side of coaxial cable. This can be done by having high impedance for some length of coax cable (odd multiple of $1/4$ wave) or using a balun. The simple balun device is a coil made with some length of coaxial cable placed just below the antenna feed point. This inductance makes the cable impedance (we mean the external side of cable shield) higher so that the RF current will find an high resistance and its value will be very low (that will not disturb I_2 and I_1 which flow inside the coaxial cable).

Easy to build Choke (current) Balun



This is the basic construction drawing for a 1:1 Choke Balun for 160 thru 10 meters using one continuous length of coax to the rig starting at the antenna attachment points. Depending on your use, coax connectors can be made for different types of antennas. The Balun should be located at the feed point of the antenna or very close to it. This drawing is not to scale and is only showing one method of winding the coax on a PVC form. The important part of the drawing is the 18 to 21 feet of coax close wound on the form. The number of coils is not important...just the cable length! Don't wind your coax tight enough to crush the internal insulation.

= NOTICE =

**The next club meeting will be held at 7:00 pm, Tuesday August 9, 2011
at the Weatherford Community Center, 701 Narrow Street Weatherford, TX
Talk-in 147.04 and Tone 110.9**

AMATEUR RADIO CLUB OF PARKER COUNTY MEMBERSHIP APPLICATION

NAME: _____ CALL SIGN: _____
LICENSE CLASS: (E)(A)(G)(T)(N) ARRL MEMBER: (YES) (NO) STATUS: (NEW) (RENEWAL)
(CIRCLE APPLICABLE ANSWERS ON ABOVE LINE)
ADDRESS: _____ EMAIL ADDRESS _____
CITY: _____ STATE: _____ ZIP (plus 4): _____
PHONE: HOME: _____ WORK: _____

INITIATION FEE: One time initiation fee per family - \$5.00

ANNUAL DUES: \$10.00. HAM FAMILY MEMBERSHIP: \$15.00 (+ 1 same household or full time college student) (Add an additional \$5.00 if you wish to receive a hard copy of the newsletter).

HAM FAMILY MEMBER NAME: _____ CALL SIGN: _____

Cut out and mail this application to the ARCPC Secretary/Treasurer along with you check or money order for the amount due. Or, bring it to the next regular club meeting.

ANNUAL MEMBERSHIP RENEWALS ARE DUE IN JUNE

W5PC

**FIRST CLASS
MAIL**

**AMATEUR RADIO CLUB OF PARKER COUNTY, INC.
P.O. BOX 1795
WEATHERFORD, TX 76086**



www.w5pc.org